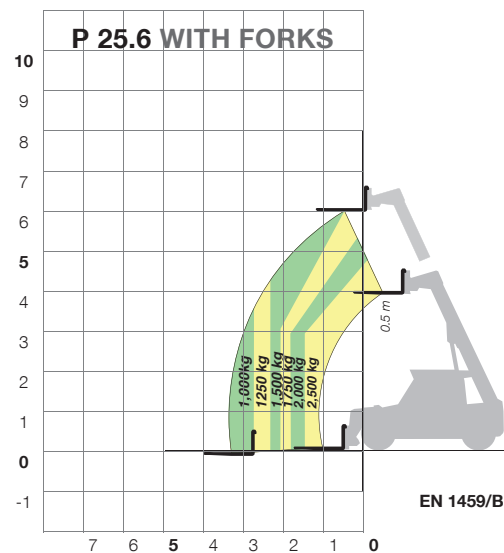


- ✓ The only one in its category with a maximum speed of 40 km/h
- ✓ The only one in its category with type approval as an agricultural tractor (optional)
- ✓ Continuous gearbox from 0 to 40 km/h without interrupting torque
- ✓ Largest cab in the category (1010 mm)
- ✓ Compact sizes (also available in L version (Low Profile) with cab lowered to 1.77 m)

SUPER COMPACT

Practical, versatile and manoeuvrable telehandlers

The most comfortable and high performance model in its category



Merlo has developed for activities carried out by farming companies, animal farms, poultry breeders and nurseries, as well as fruit-growers, municipal utilities and many others a family of "Compact" telehandlers starting with the P25.6 model - a truly "SuperCompact" machine generally used for more than 1000 hours of work/year thanks to its multiple applications making it a practical, versatile and easy-to-handle machine. It is equipped with a boom capable of reaching a height of 5.9 metres and can lift loads of up to 2500kg.

Merlo telehandlers help improve the profitability, efficiency and competitiveness of your business.



TECHNICAL INFORMATION

	P.25.6	P 25.6 L
Total unladen mass, with forks (kg)	4750	4750
Maximum capacity (kg)	2500	2500
Lifting height (m)	5.9	5.9
Turbo engine (brand/cylinders)	Kubota/4	Kubota/4
Tier 3 engine power (kW/HP)	55/75	55/75
Maximum speed (km/h)	40	40
Hydraulic system	Gears	Gears
FOPS (ISO 3449) and ROPS (ISO 3471) cab	●	●
Type approval as an agricultural tractor	○	○
Width (mm)	1800	1800
Height (mm)	1920	1770
Length (mm)	3900	3900

● As standard. ○ On request.

