

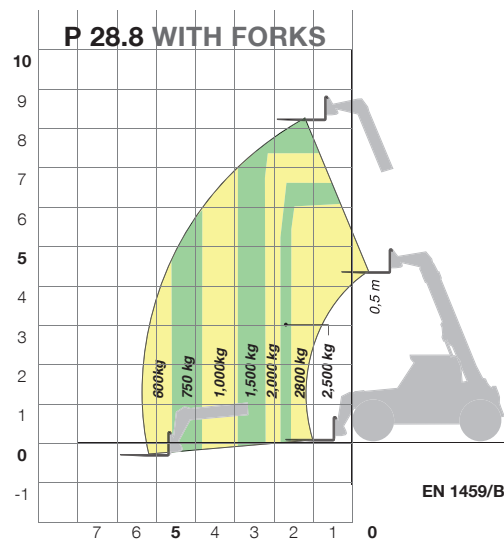
- ✔ The largest cab in the category (1010 mm)
- ✔ The only one in its category with a maximum speed of 40 km/h as standard
- ✔ Type approval as an agricultural tractor
- ✔ Compact dimensions (also available in L version (Low Profile) with cab lowered to 2.0 m)
- ✔ Reverse shuttle on joystick and on steering wheel (Dual Control)
- ✔ Load-Sensing pump - 117 l/min and Flow Sharing distributor (Top)



# COMPACTS

## Compact family handy and versatile

### P28.8 and P32.6: 101 HP for maximum performance and versatility



The P28.8 and P32.6 models in the Compact family are also designed for work on farms, animal farms, poultry breeders and nurseries, as well as fruit-growers, municipal utilities. The P28.8 and P32.6 models are equipped with Tier 4 Interim engines with electronic control at 74.5kW/101HP, Max torque 325 Nm at 1500 rpm. They cover handling tasks of up to 3.2 tonnes (P.32.6), load lifting up to heights of 8 metres (P.28.8) with a towing capacity of 19 tonnes in maximum safety, thanks to hydraulic or pneumatic trailer braking.

TECHNICAL INFORMATION	P28.8 Plus	P 28.8 Top	P32.6 Plus	P 32.6 Top
Total unladen mass, with forks (kg)	6400	6400	6150	6150
Maximum capacity (kg)	2800	2800	3200	3200
Lifting height (m)	8.2	8.2	6.4	6.4
Turbo engine (brand/cylinders)	Kubota/4	Kubota/4	Kubota/4	Kubota/4
Tier 4 Interim engine power (kW/HP)	74.5/101	74.5/101	74.5/101	74.5/101
Maximum speed (km/h)	40	40	40	40
Hydraulic system	Gears	Load Sensing	Gears	Load Sensing
FOPS (ISO 3449) and ROPS (ISO 3471) cab	●	●	●	●
Type approval as an agricultural tractor	○	○	○	○
Width (mm)	2000	2000	2000	2000
Height (mm)	2150 <sup>(1)</sup>	2150	2150 <sup>(1)</sup>	2150
Length (mm)	4260	4260	4220	4220

<sup>(1)</sup>L - Low Profile version available with cab lowered to 2 metres. ● As standard. ○ On request.

